



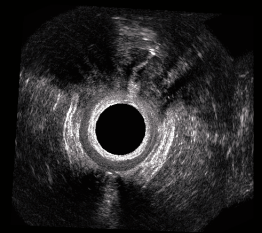
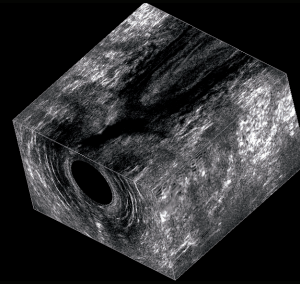
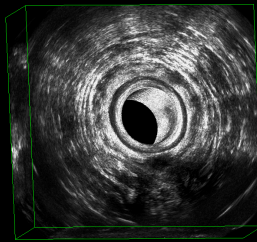
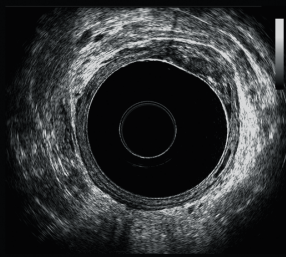
Guy's and St Thomas'



NHS Foundation Trust

Guy's and St Thomas' Endoanal and Pelvic Floor Ultrasound Course

Hands-on Endoanal and Pelvic Floor Study Days



Course ideal for those starting and or undertaking endoanal or total pelvic floor ultrasound (transperineal, transvaginal) scanning. The course gives 7 CPD Points.

The course will enable you to gain direct experience in the interpretation of the endoanal, transperineal and transvaginal scans. Small groups (limited places).

Venue: Simulation and Interactive Learning Centre
1st Floor, St Thomas House
St Thomas' Hospital
Westminster Bridge Road, London SE1 7EH

Dates: Tuesday 21st May 2019 - Endoanal Ultrasound
Wednesday 22nd May 2019 - Pelvic Floor Ultrasound

Time: 0830h to 1730h

Cost: Registrars/Trainees/Nurses/Clinical Scientists: £50 for 1 day/£100 for 2 days
Consultants: £100 for one day/ £200 for two days

Day 1 Programme

- Anatomy and Physiology of the anal canal
- 3D Endoanal Ultrasound Scanning
- Obstetric Injury
- Fistula / Sepsis
- Other

Day 2 Programme

- Anatomy and Physiology of the pelvic floor
- Clinical Assessment of the Pelvic Floor
- Total Pelvic Floor Scanning (Transperineal, Transvaginal, 3D Transvaginal Scanning), Rectocele, Enterocoele, Cystocoele, Intussusception

Both days:
Live Workshops and Several Work Stations

Please Contact:
Deepa Solanki/ Samantha Morris
02071884191

Traveling to St Thomas' Hospital

Please check that your appointment or stay is at St Thomas' Hospital.

St Thomas' Hospital, Westminster Bridge Road, London SE1 7EH, Tel: 020 7188 7188

Tube The nearest tube stations are:

- Westminster - District, Circle and Jubilee lines (10 minutes walk)
- Waterloo - Bakerloo, Jubilee and Northern lines (15 minutes walk)
- Lambeth North - Bakerloo line (15 minutes walk)

Bus Allow 15 - 20 minutes to get from the bus stop to where you need to be in the hospital.

The following bus routes serve St Thomas':

- 12, 53, 148, 159, 211, 453, C10 - stop at Westminster Bridge Road
- 77, 507, N44 - stop at Lambeth Palace Road
- 3, 344, C10, N3 - stop at Lambeth Road (15 minutes walk)
- 76, 341, 381, RV1 - stop at York Road
- N44, N155, N159, N381 - Night buses stop at Westminster Bridge Road
- N3 Night bus stops at Lambeth Road

See the bus routes map (PDF 203Kb) or for information about buses and tubes, please call Transport for London on 020 7222 1234 (24 hours) or visit the Transport for London journey planner website.

Bicycle Bicycle racks are located at the front of the main reception along side Gassiot House and next to the Florence Nightingale Museum, both areas are covered by CCTV. See useful cycling information on the Transport for London website.

Train Waterloo, Waterloo East, Victoria and Charing Cross are the nearest railway stations, and a 15 minute walk away. For further information, please call National Rail Enquiries on 08457 484950 or visit National Rail website.

Car Parking for patients and visitors is very limited, and there is often a queue. The car park is 'pay on foot' so please have the correct change. Pay and get your exit ticket before returning to your car.

Parking charges:

£2.30 per hour or any part of an hour. Apply 24 hours a day.

Free for disabled patients with an appointment that day - get a form from the main reception for your clinicians to sign. 16 free disabled parking bays outside the main car park for visitors and relatives.

