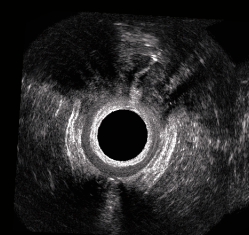
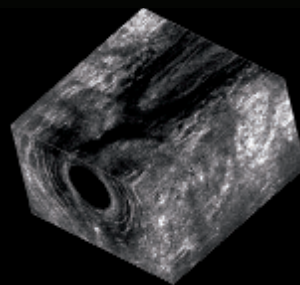
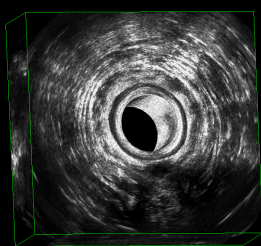
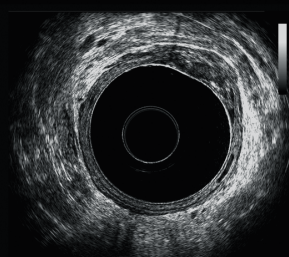




# Guy's and St Thomas' Endoanal and Pelvic Floor Ultrasound Course

## Hands-on Endoanal and Pelvic Floor Study Days



Course ideal for those starting and or undertaking endoanal or total pelvic floor ultrasound (transperineal, transvaginal) scanning. The course gives 7 CPD Points.

The course will enable you to gain direct experience in the interpretation of the endoanal, transperineal and transvaginal scans. Small groups (limited places).

Venue: Simulation and Interactive Learning Centre  
1st Floor, St Thomas House  
St Thomas' Hospital  
Westminster Bridge Road, London SE1 7EH

Dates: Tuesday 10<sup>th</sup> April 2018 - Endoanal Ultrasound  
Wednesday 11<sup>th</sup> April 2018 - Pelvic Floor Ultrasound

Time: 0830h to 1730h

Cost: Registrars/Trainees/Nurses/Clinical Scientists: £130 for 1 day/£220 for 2 days  
Consultants: £230 for one day/ £320 for two days

### Day 1 Programme

- Anatomy and Physiology of the anal canal
- 3D Endoanal Ultrasound Scanning
- Obstetric Injury
- Fistula / Sepsis
- Other

### Day 2 programme

- Anatomy and Physiology of the pelvic floor
- Clinical Assessment of the Pelvic Floor
- Total Pelvic Floor Scanning (Transperineal, Transvaginal, 3D Transvaginal Scanning), Rectocele, Enterocoele, Cystocoele, Intussusception

Both days:  
Live Workshops and Several Work Stations

Please Contact:  
Sam Morris/ Deepa Solanki  
0207 188 9918/4191

# Traveling to St Thomas' Hospital

Please check that your appointment or stay is at St Thomas' Hospital.

St Thomas' Hospital, Westminster Bridge Road, London SE1 7EH, Tel: 020 7188 7188

**Tube** The nearest tube stations are:

Westminster - District, Circle and Jubilee lines (10 minutes walk)

Waterloo - Bakerloo, Jubilee and Northern lines (15 minutes walk)

Lambeth North - Bakerloo line (15 minutes walk)

**Bus** Allow 15 - 20 minutes to get from the bus stop to where you need to be in the hospital.

The following bus routes serve St Thomas':

12, 53, 148, 159, 211, 453, C10 - stop at Westminster Bridge Road

77, 507, N44 - stop at Lambeth Palace Road

3, 344, C10, N3 - stop at Lambeth Road (15 minutes walk)

76, 341, 381, RV1 - stop at York Road

N44, N155, N159, N381 - Night buses stop at Westminster Bridge Road

N3 Night bus stops at Lambeth Road

See the bus routes map (PDF 203Kb) or for information about buses and tubes, please call Transport for London on 020 7222 1234 (24 hours) or visit the Transport for London journey planner website.

**Bicycle** Bicycle racks are located at the front of the main reception along side Gassiot House and next to the Florence Nightingale Museum, both areas are covered by CCTV. See useful cycling information on the Transport for London website.

**Train** Waterloo, Waterloo East, Victoria and Charing Cross are the nearest railway stations, and a 15 minute walk away. For further information, please call National Rail Enquiries on 08457 484950 or visit National Rail website.

**Car** Parking for patients and visitors is very limited, and there is often a queue. The car park is 'pay on foot' so please have the correct change. Pay and get your exit ticket before returning to your car.

Parking charges:

£2.30 per hour or any part of an hour. Apply 24 hours a day.

Free for disabled patients with an appointment that day - get a form from the main reception for your clinicians to sign. 16 free disabled parking bays outside the main car park for visitors and relatives.

