

Multicentre cohort study of short course preoperative radiotherapy (SCPRT) and delayed Transanal Endoscopic Microsurgery (TEMs) in frail patients with early stage rectal cancer

Smart CJ, Rawstorne E, Hill J, Speake D, Robinson J, Steward M, Levy B, Badiani S, Geh I, Korsgen S, Bach SP

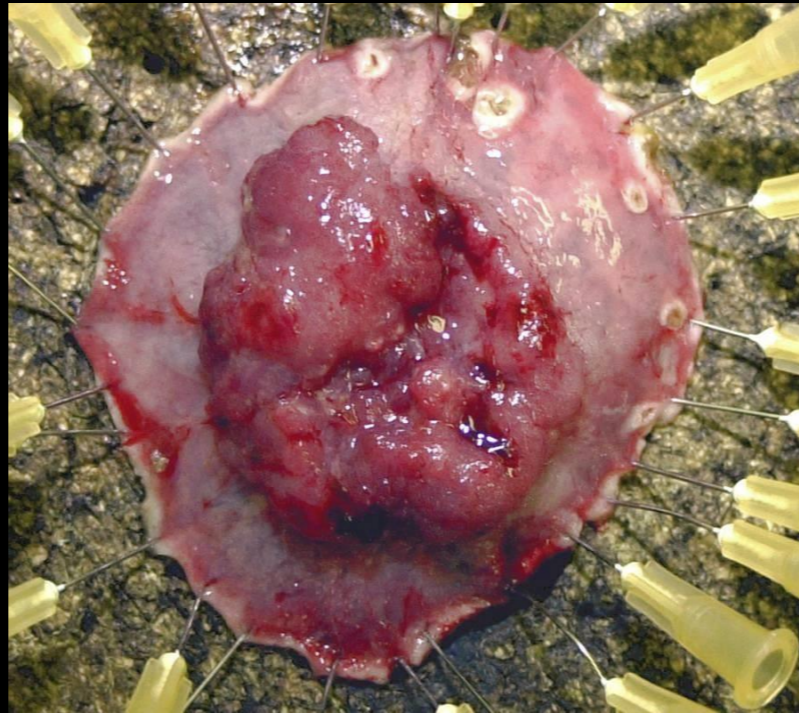
Manchester Royal Infirmary, Bradford Royal infirmary, Western Sussex Hospitals, Heart of England Foundation Trust, Queen Elizabeth Hospital Birmingham.

No conflicts of interest

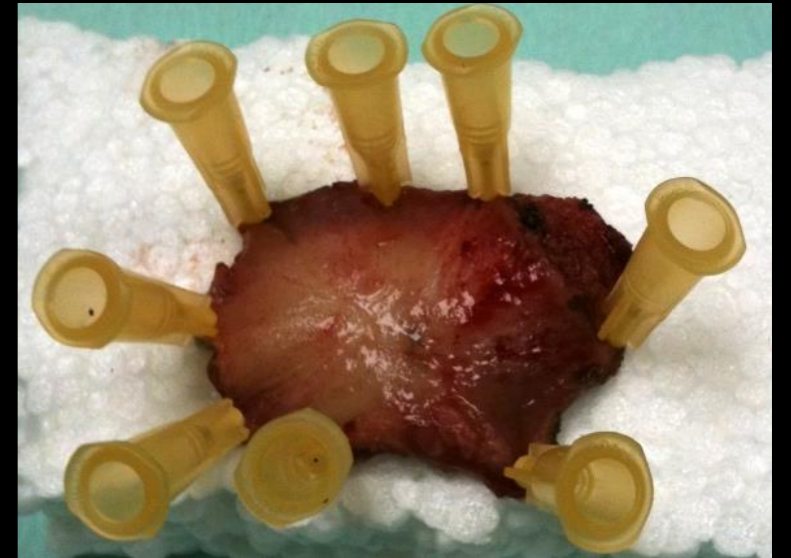
# What is the benchmark for T1 and T2?



Standard surgery  
+/- radiotherapy



TEM



Radiotherapy  
+/- TEM

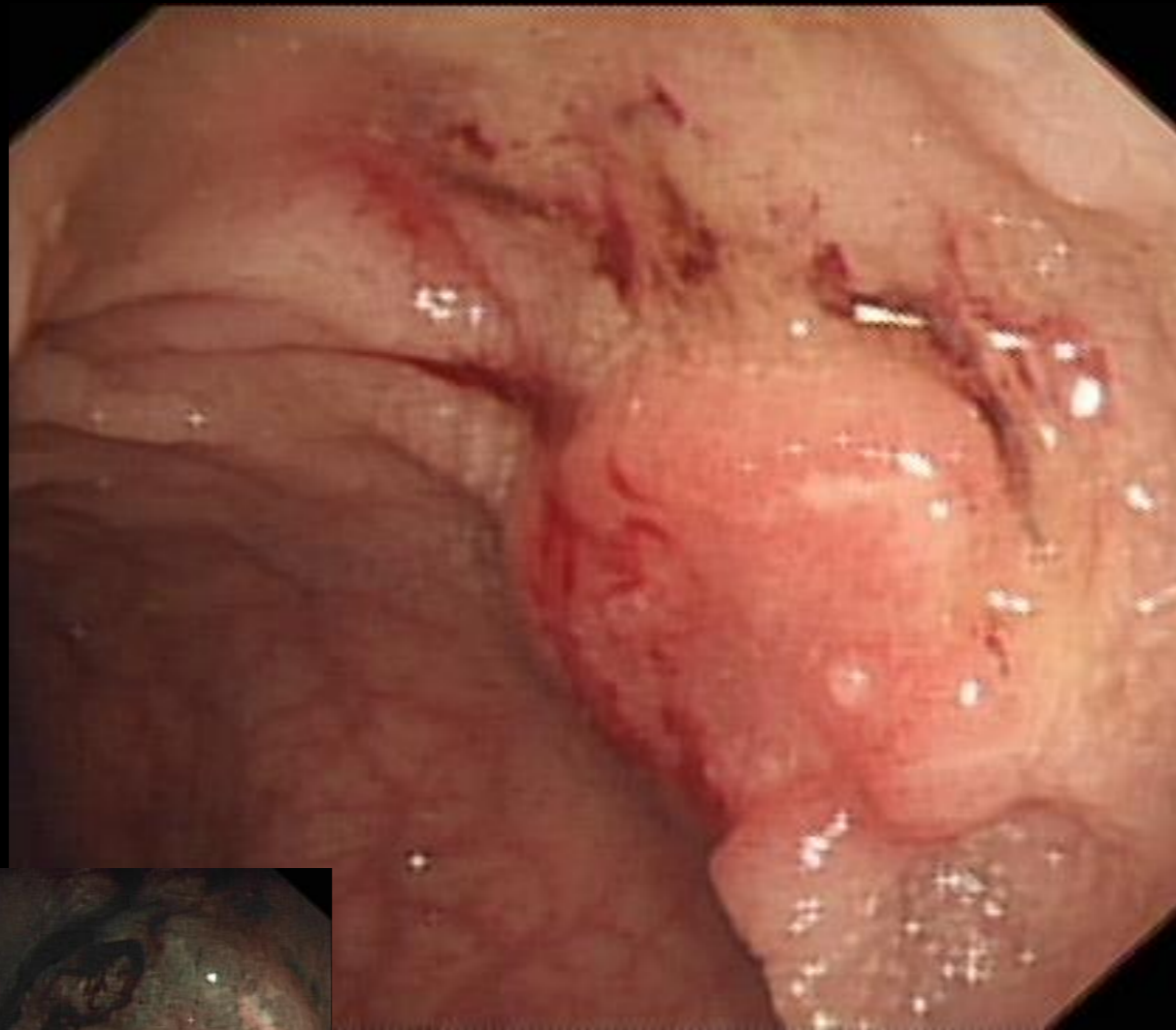
# SCPRT and TEMS cohort study

Manchester, Chichester, Bradford and Birmingham

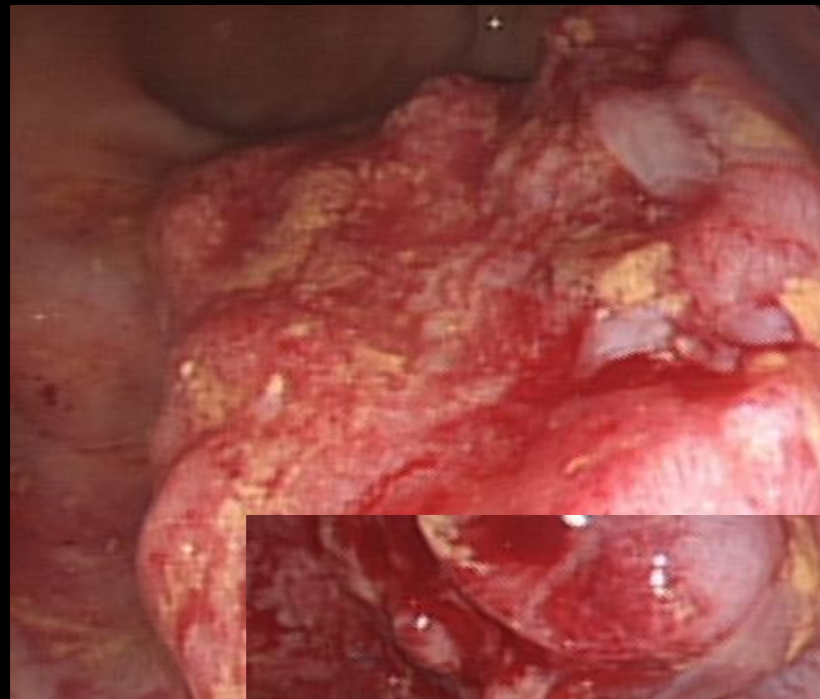
- 5 centres
- 63 patients (2007- 2012)
- median age 75 (range 51-94)
- Staged > T3 (MRI and ERUS)



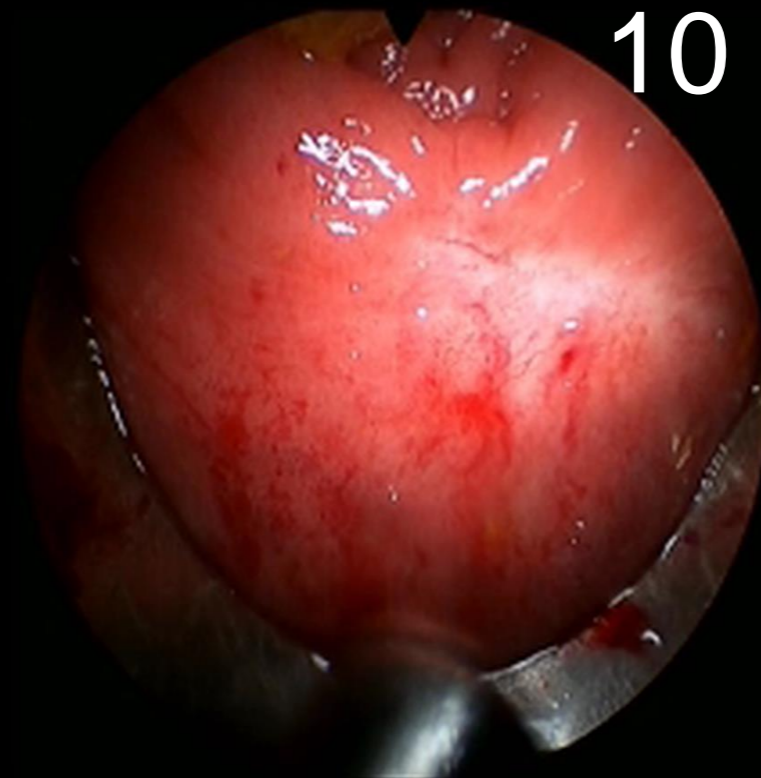
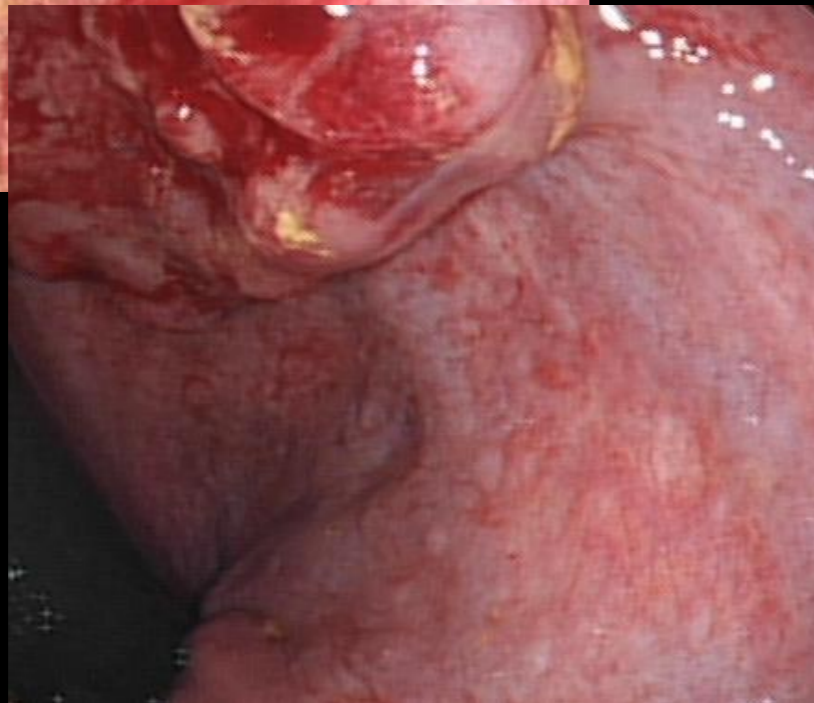
# Typical pathology



# Complete clinical/ pathological response



uT2



10 weeks

pCR



# SCPRT and TEMS results

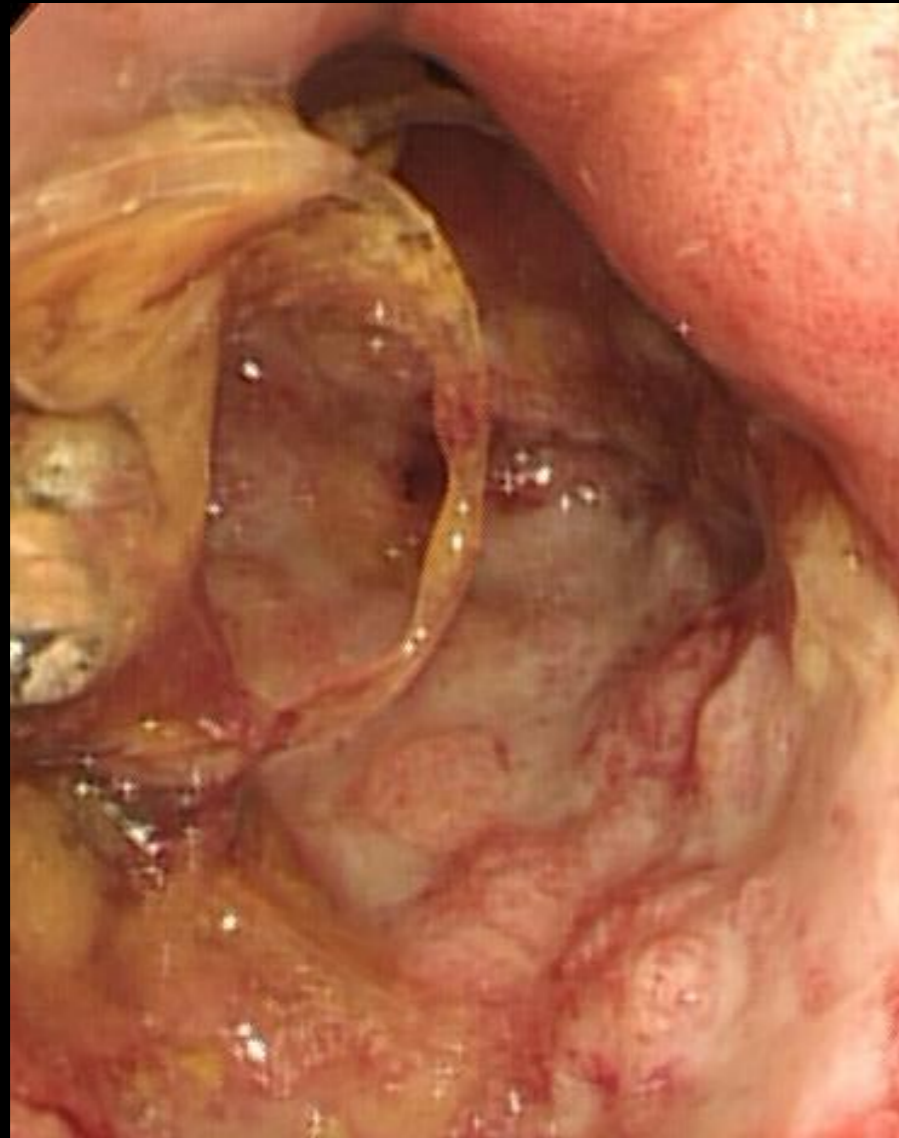
	pCR	ypT1	ypT2	ypT3	
<b>n</b>	<b>20</b>	<b>23</b>	<b>19</b>	<b>1</b>	<b>63</b>
<b>%</b>	<b>32%</b>	<b>36%</b>	<b>30%</b>	<b>2%</b>	
<b>R1</b>	<b>0</b>	<b>0</b>	<b>2</b>	<b>1</b>	<b>3</b>
<b>Local recurrence</b>	<b>0</b>	<b>0</b>	<b>4</b>	<b>0</b>	<b>4</b>
<b>Distant recurrence</b>	<b>1</b>	<b>1</b>	<b>1</b>	<b>0</b>	<b>3</b>
<b>Mean follow up m (range)</b>	<b>24 (2-48)</b>	<b>12 (5-30)</b>	<b>15 (1-48)</b>	<b>12</b>	<b>13</b>

# COMPLICATIONS

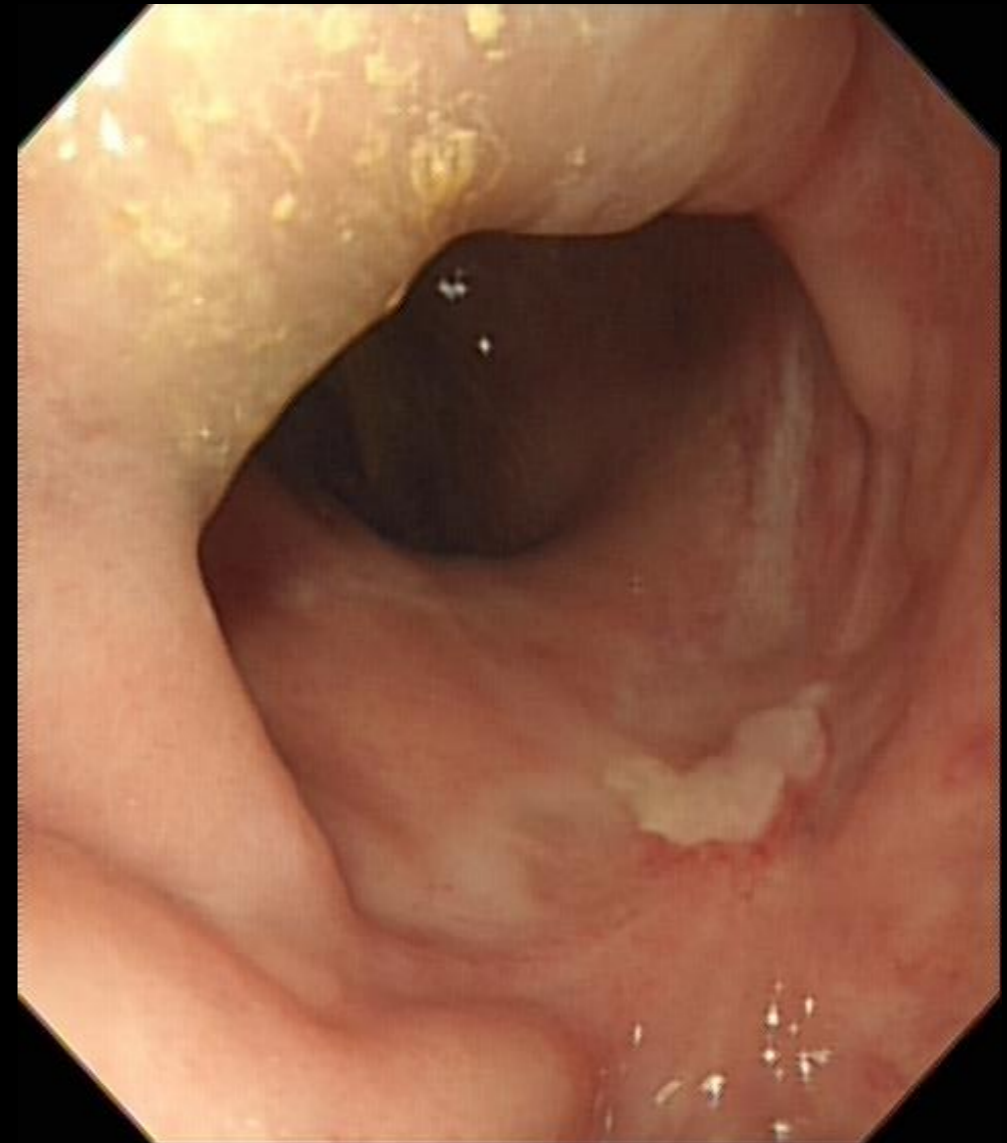
	Acute (%)	Chronic (%)
Radiotherapy proctitis	4.8	1.6
<b>SURGICAL</b>		
Suture line dehiscence	12.7	
Soiling, urgency, diarrhoea	19.0	4.8
Rectal Pain	4.8	1.6
<b>MEDICAL</b>		
MI	1.6	
Confusion	1.6	1.6
<b>Total (% of patients)</b>	<b>33.3</b>	<b>7.9</b>



# COMPLICATIONS



SUTURE LINE DEHISCENCE  
12.7%



AT 1 YEAR

# LOCAL Recurrence

## □ Site

- Lymph nodes – 1/4 N+
- Lumen – 4/4 luminal recurrence

## □ Risk factors

- 4/4 T2 i.e. no radiotherapy response
- 2/4 also poorly differentiated

# SURVIVAL

- **52 (82.5%) patients alive.**
- **48 (76.2%) alive + disease free**
  
- **11 deaths**
  - **7 not disease related**
  - **4 disease related**
    - **1 TEM mortality (ASA 4)**
    - **1 cardiac event after successful salvage surgery**

# Conclusions

- **Safe in frail, elderly population**
- **1/3 pCR + 1/3 ypT1 = satisfactory response**
- **1/3 no response**
- **Local recurrence predictable**
  - **lack of response**
  - **presence of an additional adverse feature**