

Newsletter

June 2008

National Coordinating Office Opens for Business!

- The first surgeons register for the new National Training Programme in Laparoscopic Colorectal Surgery

- The Training Centres in Nottingham and Portsmouth get ready to receive their first trainees

The new programme is up and running! At the time of going to press 11 surgeons from around the country have registered for the programme and are currently being processed to ensure that:

- They fulfil the surgical requirements
- Their Trust is providing the appropriate support
- The requested Training Centres can take on the surgeons as soon as possible.

The Coordinating Office is now in place at Castle Hill Hospital. The team is led by Helen Procter and assisted by Claire Acey.

Both have vast experience dealing with surgeons and their demands, so should be well placed to sort out all aspects of the training issues.

Please don't hesitate to contact the office to discuss any problems you may have — that is what the office is there for after all.

Welcome Message

Welcome to the first newsletter of the National Training Programme for Laparoscopic Colorectal Surgery. Within these pages you will find lots of information regarding the programme as it has developed since the first negotiations in early 2007.

Many people have been involved in the work to date and grateful thanks are due to Professor Mike Richards and Teresa Moss from the Cancer Action Team for their unstinting support in getting the project off the ground—as well as securing the vital funding of course!

This is a new and innovative programme that has never been tried in the field of surgical training. It is in evolution and more changes are in the pipeline. Of course, we need your feedback so please get in touch with your comments.

Coordinating Office in Hull

Contact details:

Tel 01482 624315 Fax 01482 623274

Email h.procter@hull.ac.uk/c.l.acey@hull.ac.uk

Coordinating Office:

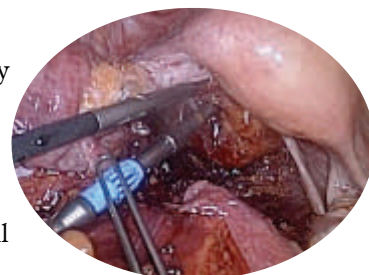
Academic Surgical Unit, Castle Hill Hospital

Castle Road, Cottingham, East Yorkshire HU16 5JQ

WHAT YOU NEED TO DO - BOTH TRAINEES & TRAINING CENTRES

One of the biggest challenges facing this new initiative is to demonstrate that the programme is working—in other words, that the trainees are being trained properly and often enough. This is no different in many respects to traditional surgical training and so the requirements will also be the same—**YOU NEED TO MAINTAIN A LOGBOOK!** **This applies to both the trainee and the training centres.** Obviously, the trainee needs to demonstrate that they are getting access to the right number and type of cases. The centres also have to show they are doing the work — after all they are being paid to do this work!

Expect Helen and Claire to be chasing you up for this information before long.



National Training Programme in Laparoscopic Colorectal Surgery

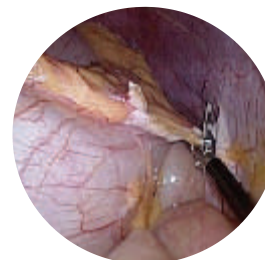
SO WHAT EXACTLY IS THE PROGRAMME AND WHO IS INVOLVED?

Everyone recognises that laparoscopic surgery has been a huge advance for both patients and surgeons alike over the last 20 years or so. Operations like cholecystectomy, Nissen fundoplication, appendicectomy and hernia repair are now part of routine surgical culture and practice. Less so is laparoscopic colorectal surgery, despite being around for almost as long as the other operations. At the last count less than 15% of colorectal resections in the UK were performed laparoscopically.

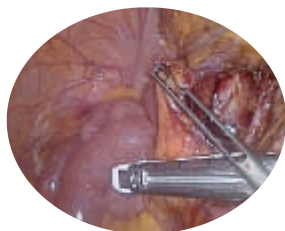
It has long been appreciated that colorectal surgery presents some unique training challenges — the treatment of malignancy being only one — and that a large cohort of consultant surgeons in the UK missed the training boat. In 2008 there is an increasing enthusiasm amongst both surgeons and patients for laparoscopic resection. Unfortunately,

there is a shortfall of properly trained surgeons and if the NICE recommendations are to be achieved then something special needed to be done.

This resulted in proposals being put to Professor Mike Richards and his Cancer Action Team to speed up the adoption of laparoscopic colorectal surgery. Funding was secured for the programme in 2007, training centres identified and the co-ordinating office opened for business in 2008.



THE PROGRAMME AND THE TRAINING CENTRES—WHAT WAS THE PROCESS?



During 2007 detailed discussions were held to develop the programme and the training models to be used. Expressions of interest were sought from potential training centres within England and ultimately formal interviews were held in early 2008. After external review of the bids 11 centres were chosen to cover

training in England. Three of these centres represented consortia bids with several individual hospitals. Full details of the centres and their participating hospitals are seen elsewhere.

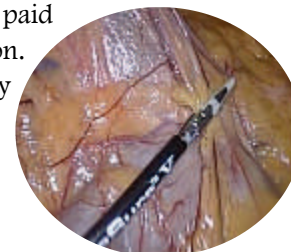
From the outset it was determined that the overall programme should be coordinated by a single centre office appointed specifically for that purpose. Once again, after interviews the bids were assessed and Hull was chosen to undertake this work. A dedicated office has been established — separate from the training centre work for Hull — that serves as a single point of

contact for trainees and training centres alike.

Finally, it was recognised that this was also a good opportunity to address the topical issues of training and competency assessment. Led by George Hanna and his team, Imperial College in London has been commissioned to develop an educational platform and standards. Hopefully, these can be rolled out as a standard approach to be used by all centres in due course.

NEW INCREASED TARIFF FOR LAPAROSCOPIC COLORECTAL RESECTION

It has recently been decided at Department of Health level to increase the national tariff paid to Trusts for laparoscopic colorectal resection to a level significantly above open resection. Hopefully, this will encourage PCTs and Trust Chief Executives that laparoscopic surgery is the way to go! Look out for the new figures when they are announced.



THE STEERING GROUP

How the training programme is governed

The National Training Programme is governed by a National Steering Group that is responsible for the overall management and decision making processes. As the coordinating office is in Hull the Steering Group is chaired by Mr John Hartley, who is also the ACPGBI Colorectal Tutor. Also represented on the Steering Group is:

- One member from each centre (not individual hospital)
- Cancer Action Team
- Department of Health
- Imperial College (Educational Group)
- ALSGBI

The Steering Group plans to meet quarterly at this stage simply because this is a new venture for all concerned and undoubtedly changes will need to occur as all the stakeholders learn more about the process. Clearly with such an innovative approach to consultant training, some things will work better than others so the programme must be ready and willing to make the changes as required.



What is a Training Course?

In the UK animal based surgical training has never really been possible. Consequently, surgeons have always travelled abroad to gain such experience. Many of the centres sponsored by industry such as Elancourt, Hamburg and Strasbourg continue to offer valuable experience. Such courses are required by the National Training Programme so if you have not done one yet please contact your friendly local Industry rep and see what they can do to help.

New developments

In recent years cadaveric courses have been established around the world. Fresh frozen cadavers offer the most realistic training model currently available but the training is limited and costly.

The Newcastle Surgical Training Centre directed by Alan Horgan currently offers the only such courses in the UK. These courses have limited spaces but are highly recommended.

The National Training Programme accepts the Newcastle Cadaveric Course as an acceptable alternative to a traditional animal course.

What do you need to sign up?

The Basics

Several surgeons have asked about the requirements to enter the programme. In particular, they have asked which types of courses are acceptable in order to sign up. The basic requirements are:

- Being in active laparoscopic practice
- Completed a dry lab/didactic course
- Completed a wetlab or animal course

Because there are limited places available on the National Training Programme, it has been agreed that trainees must have some basic laparoscopic expertise and training. This is not a training programme for the complete novice!

If you are interested trainees MUST register with the Coordinating Office and not individual centres.

The Coordinating Office in Hull

Helen Procter: Administrator

Helen is the new administrator in the Coordinating Office, having spent 12 years working within Academic Surgery at the University of Hull

Claire Acey: Administrative Support

Claire will be providing Helen with invaluable administrative support. Claire has several years experience running postgraduate surgical courses including the Hull based Deep Course in laparoscopic colorectal surgery.

Contact details:

T: 01482 624315 F: 01482 623274

E: h.procter@hull.ac.uk/c.l.acey@hull.ac.uk

Academic Surgical Unit

Castle Hill Hospital

Castle Road

Cottingham

East Yorkshire HU16 5JQ

National Training Programme in Laparoscopic Colorectal Surgery

National Coordinating Centre – Hull & East Yorkshire Hospitals NHS Trust

Tel 01482 624315

Education & Assessment Development – Imperial College, St Mary’s Hospital, London

Tel 0207 886 2124

List of Centres (by Deanery)

YORKSHIRE & HUMBER – National Coordinating Centre

Hull & East Yorkshire Hospitals NHS Trust - Castle Hill Hospital, Hull

EAST MIDLANDS

Nottingham University Hospitals NHS Trust – Queens Medical Centre, Nottingham

WESSEX

Portsmouth Hospitals NHS Trust – Queen Alexandra Hospital, Portsmouth

OXFORD

Oxford Radcliffe NHS Trust – John Radcliffe Hospital NHS Trust

SOUTH WEST

South West Laparoscopic Colorectal Consortium – Plymouth Hospitals NHS Trust/North Bristol NHS Trust/Yeovil District NHS Foundation Trust/Bristol University Hospitals NHS Trust

NORTH EAST

Newcastle Upon Tyne Hospitals NHS Trust – Freeman Hospital, Newcastle

YORKSHIRE & HUMBER

Bradford Teaching Hospitals NHS Foundation Trust – Bradford Royal Infirmary, Bradford

WESSEX

The Pelican Cancer Foundation — Basingstoke & North Hampshire Foundation Trust/Frimley Park Hospital Foundation Trust/The Pelican Cancer Foundation

LONDON

King’s College Hospital NHS Foundation Trust — Kings College Hospital/Guy’s & St Thomas’ NHS Foundation Trust

LONDON

Northwest London Hospitals NHS Trust — St Mark’s Hospital, Middlesex/Essex Rivers Healthcare Trust, Colchester/Royal Surrey County Hospital NHS Trust, Guildford

LONDON

Imperial College London

& The Royal Marsden NHS Foundation Trust — St Mary’s Hospital, London/The Royal Marsden Hospital, London